

# Archer County 4-H News

## INSIDE THIS ISSUE:

Archery	2
Foods & Nutrition Dates to Know	2
Sheep & Goat Validation	3
Heifer Validation	3
Swine Validation	3
Calf Scrambles	3
Major Show Entries	4
Food Contest Information	4-5
Facebook	5

Maranda Revell  
County Extension Agent  
Family and Community  
Health  
[madavis@ag.tamu.edu](mailto:madavis@ag.tamu.edu)

Joshua Smartt  
County Extension Agent  
Agriculture/Natural  
Resources  
[joshua.smartt@ag.tamu.edu](mailto:joshua.smartt@ag.tamu.edu)



## 4-H Enrollment

It's time to start enrolling again online. You are not an official 4-H member until you are registered.

**PARENTS & VOLUNTEERS**, you cannot work with youth until you complete your profile and background check.

All registration will take place on 4-H Connect. Please visit [texas.4honline.com](http://texas.4honline.com)

Here are some things to remember as you re-enroll:

- If you have forgotten your e-mail address or password - **DO NOT** create another profile in 4-H CONNECT. Call your county office and they can help get you logged in!
- When you enroll in 4-H we put you on our lists for information and then you will receive notice about events. It is up to you to sign up and /or attend the events you and your children are interested in, you don't have to do everything!
- Please do not worry if you are still pending at the county level once you have enrolled. The county office will try to keep up as best we can by approving them at least once a week. As long as you complete your enrollment, you are in the system and good to go!

Please don't hesitate to call us for help! 940-574-4914

## Club Meetings Have Begun

### Archer City 4-H Club

Tuesday, October 20, 2019 at 7:00 PM  
at Archer County Activity Building

### Holliday 4-H Club

Tuesday, October 13, 2019 at 6:00 PM  
at Holliday First Baptist Church-Fellowship Hall

### Windthorst 4-H Club

Sunday, November 4 at 2:00 PM  
at Windthorst ISD Gym Foyer

# Archery Project

Archer County 4-H Archery will begin soon. The first Archery Safety will be held on October 11, at 2:00 pm at the Archer County Shooting Sports Range.

# Rifle & Pistol Project

Archer County 4-H Rifle & Pistol will begin soon. The first Rifle & Pistol Safety will be held on October 18, at 2:00 pm at the Archer County Shooting Sports Range.

# Foods & Nutrition

District Food Show entries due	October 22
District Food Show	November 7
County Ag Product I.D. entries due	November 9
County Ag Product I.D.	November 16
District Ag Product I.D. entries due	November 30
District Ag Product I.D.	December 16

\*\*\*All District level dates are subject to change\*\*\*

\*\*\*Entry fees will apply\*\*\*

## **Livestock Judging**

Anyone interested in Livestock Judging should begin attending practices. Practice will be held every Monday at 6pm at the County Show Barn. Please contact Josh if you would like to participate – 940-574-4914

You must be attending practices to be considered for a team. Teams are registered for the following contests:

The District Livestock Judging contest will be held on November 4, 2019 in Vernon. Parents must be able to provide travel for your child. If you would like to purchase a meal ticket please let Josh know. Entries are due by October 18 in 4-H Connect. Go to [V2.4honline.com](http://V2.4honline.com) to enter.

## **Sheep & Goat Validation**

Validation will take place on October 29, between 4-7 pm at the Holliday Ag Facility. If you have a conflict with this date/time, please contact Josh, BEFORE October 28. 940-574-4914

## **Heifer Validation**

Validation will take place on October 29, between 4-7 pm at the Holliday Ag Facility. If you have a conflict with this date/time, please contact Josh, BEFORE October 28. 940-574-4914

## **Swine Validation**

Validation will be in November a date has not been set. The validation committee will come to you, but you MUST call to get on the list! Call Josh at 940-574-4914 to get on the schedule or if you have a conflict.

## **Calf Scrambles**

Each of the major stock shows offer a calf scramble contest. Winning during a calf scramble provides the 4-Her with a certificate to put towards their project for the next year. Each show allows different uses of the certificates, and not all require use of the certificate towards livestock! Some even provide scholarships upon graduation!

Each show has different requirements for age/grade and even participant weight.

Calf Scramble deadlines are not the same as livestock and contest entries, most are first come-first served. If you are interested in any of the scrambles, please get with Josh, ASAP!

There will be registration forms and waivers to sign.

Entries are not guaranteed participation as it is first-come, first-serve basis so get them in early!

## Major Show Entries

Josh and Maranda will be available to assist with major stock show entries on November all day, with extended hours until 7:00 pm. We will have copies of all the entry forms available. Please make sure you bring your calendar, youth social security number, Quality Counts number and your payment!

**November 6<sup>th</sup> is the final day for all stock show entries!** This will include shooting sports, livestock and foods entries along with any other entry that has to be processed by the Extension Office.

## Ag Product I.D.

Contestants work individually through 20 stations. Each station will contain one (1) Texas Agricultural Product selected from the Texas Agriculture Products List and two (2) multiple choice questions. The first question of each station will always be identification of the product from four possible choices. The second question of each station will be general to the industry that produced the product (i.e. Texas' national ranking, economic impact to Texas, general nutritional contest, region of production) or specific to the individual product on display (i.e. cooking method, use, growing season). Contestants are given 30 seconds at each station to answer both questions. Youth can participate as a team or as an individual.

County Ag I.D. entries will be due to Maranda by November 9 and will cost \$3.00 per participant. County Ag I.D. contest will be held on November 16 at 6:00, at the Archer County Activity Center. Youth do not have to compete locally to advance to district.

There is an optional state sponsored, virtual, practice contest on November 10. Register through 4-H Connect by October 28

District Ag Product I.D. entries will be due to Maranda by November 30 before 5:00. Entry fee is \$10.00

District Ag Product I.D. is scheduled for December 16 in Goree.

## Like Us on Facebook

**Archer County 4-H**

[www.facebook.com/archercountyextension](http://www.facebook.com/archercountyextension)

**Archer City 4-H Club**

[www.facebook.com/archercity4h](http://www.facebook.com/archercity4h)

**Archer County 4-H Archery Club**

[www.facebook.com/ArcherCounty4HArchery](http://www.facebook.com/ArcherCounty4HArchery)

**Holliday 4-H Club**

[www.facebook.com/groups/holliday4h](http://www.facebook.com/groups/holliday4h)

**Windthorst 4-H Club**

[www.facebook.com/Windthorst-4-H-Club-1525935824342379](http://www.facebook.com/Windthorst-4-H-Club-1525935824342379)



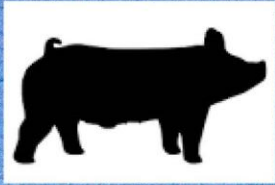
# **Lonesome Dove Classic**

## Honoring Archer County Leaders

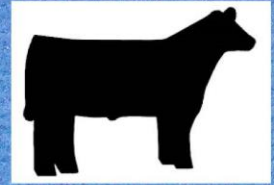
**November 14-15, 2020**

**Archer County Show Barn**

**Archer City, TX**



**STEERS, HEIFERS,  
LAMBS, & GOATS**



**NOV 14**

**Buckles for Grand  
& Reserve**

**Banners to all  
Breed Champions**

**HOGS**

**NOV 15**

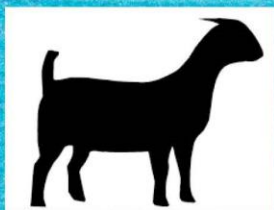
**Showmanship  
\$5 at the gate**

**All proceeds go to  
Archer County 4-H**

**Weight Cards due at 9am**

**Showmanship starts at 9:30am**

**Entries are \$30 per head**

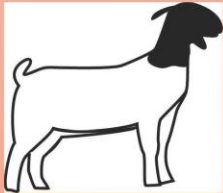


**Judges TBA**





# ARCHER COUNTY LAMB AND GOAT CLINIC



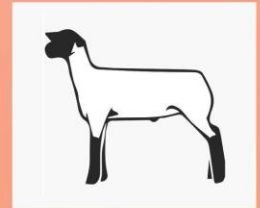
October 17, 2020

9am - 12pm

Archer County Show Barn.

512 W. Cottonwood

Archer City, Texas



Showmanship Show following the clinic.

\$5 at the gate

Winner takes all

Junior, Intermediate, & Senior.

**GUEST  
SPEAKERS**

**JILL GLADDEN  
&  
SARAH LOVING**

**\$15.00 per  
participate**

**Topics to include:**

**Feeding**

**Exercise**

**Showmanship**

To register please contact the Archer County Extension office at  
(940)-574-4914

“Texas A&M AgriLife Extension is an equal opportunity employer and  
program provider.”

# Archer County Steer & Heifer Clinic

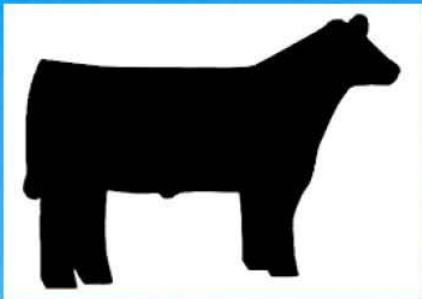
October 10, 2020

9am - 12pm

Archer County Show Barn

512 W. Cottonwood

Archer City, Texas



Showmanship Show to  
follow clinic.

\$5 at the gate

Winner takes all

Junior, Intermediate,, &

Senior

Karl Winge will be speaking

Texas A&M AgriLife Extension is an equal opportunity  
employer and  
program provider."